

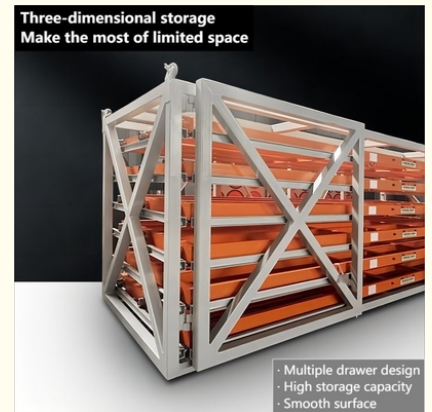


Heavy Duty Metal Sheet Racking Drawer Roll-out Storage Rack for Warehouse Height 0-5m

Our Product Introduction

for more products please visit us on warehouse-rackings.com

Basic Information

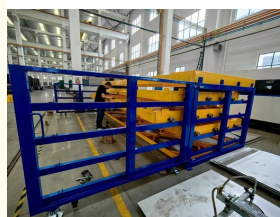
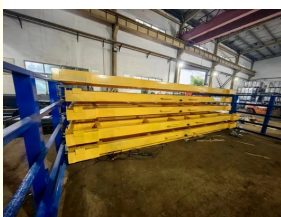


Product Specification

- Model NO.: QF-Sheet Racking
- Material: Steel
- Structure: Drawer
- Type: Multi-Level Racking
- Mobility: Combined
- Height: 0-5m
- Weight: Customized
- Closed: Semi-closed
- Development: New Type
- Serviceability: For Special Purpose
- Color: Customized
- Lead Time: 20 Days
- Surface Treatment: Powder Coating
- Feature: Anti-Wear/Anti-Rust
- Transport Package: Standard Export Packing



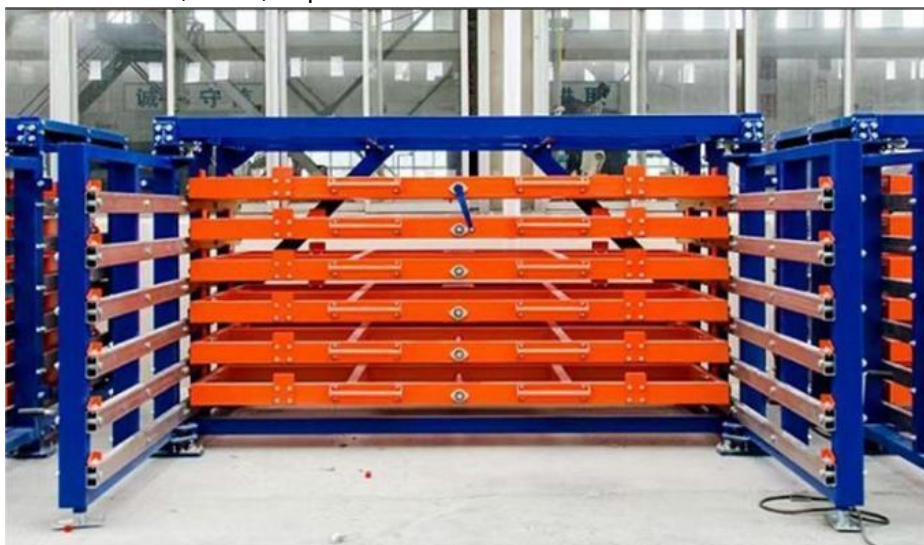
More Images



Product Description

Product Description

A roll-out sheet rack is a type of storage system that allows for easy access and organization of large, flat sheets like metal, wood, or plastic.



Brand Name	Qifei
Product name	Warehouse Heavy Duty Hand Cranked Metal Sheet Racking
Length	Customized
Width	Customized
Height	Customized
Capacity	hundreds to thousands kg/layer
Material	Q235B
OEM&ODM	Available
Surface Treatment	Galvanized/Powder Coating
Color	Customized
Sample	Available
General Use	Warehouse Shelving/Rack, manufacturing or construction environments etc.
HS CODE	730890
Packaging Details	Plastic banding+Stretch film wrapped

The key features and parameters of a roll-out sheet rack include:

Rack Construction:

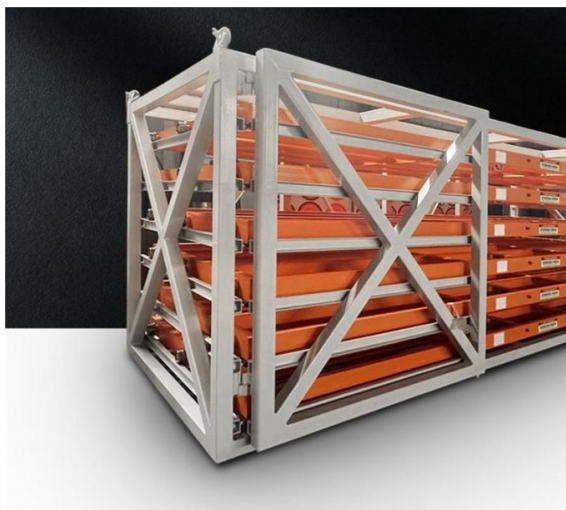
Frame material: Often made of steel, aluminum for strength and durability.

Roller system: Smooth-rolling casters or bearings that allow the racks to extend out.

Shelving: Adjustable, reinforced shelves to hold the sheet materials.

Capacity: The maximum weight the rack can safely support, typically ranging from hundreds to thousands of pounds.





Roll-Out Mechanism:

Extension length: How far the rack can roll out from the stationary frame.

Locking system: To secure the rack in the extended or retracted positions.

Ergonomics: The ease of operating the roll-out mechanism.

Sheet Retention:

Retaining lips or guides: To prevent sheets from sliding off the shelves.

Adjustable stops: To customize the shelf depth for different sheet sizes.

Anti-tilt features: To improve stability and safety when extended.

Dimensions:

Rack size: Width, depth, and height to accommodate the desired sheet sizes.

Shelf spacing: Vertically adjustable to fit different sheet thicknesses.

Safety and Compliance:

Load ratings: Ensuring the rack can safely support the intended weights.

Stability: Preventing tipping or collapse when extended or loaded.

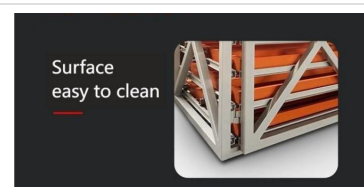
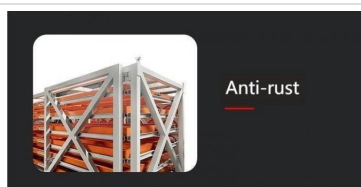
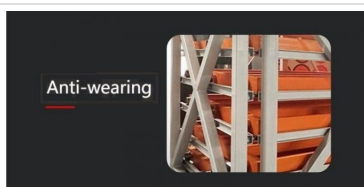
Regulatory standards: Meeting any industry or workplace safety requirements.



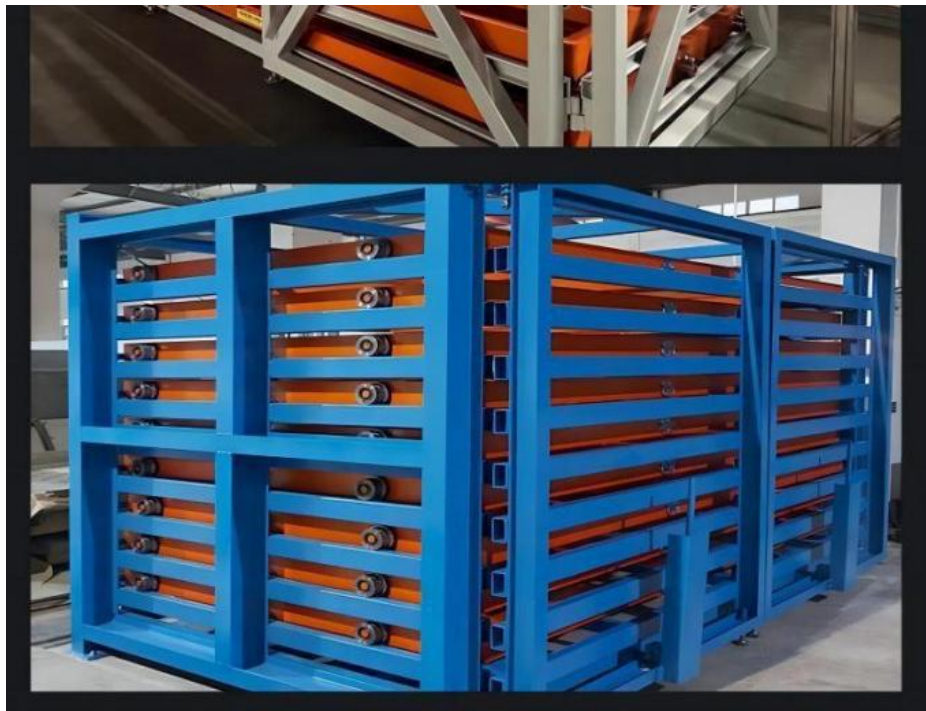
The specific parameters will depend on **the application, sheet materials, volume, and workflow needs**. Proper selection and installation of a roll-out sheet rack can greatly improve organization, accessibility, and efficiency in sheet material storage and handling.

If you have any need, don't hesitate, just contact us!

Our Advantages







Company Profile

Welcome to visit our company

Jiangsu Qifei Intelligent Storage Equipment Co., Ltd



Established in 2020, is one of the leading manufacturer specialized in industrial warehouse storage equipment



Main products are heavy/medium/light duty rack, cantilever rack, mezzanine floor, drive in rack, and so on.



We aim to provide cost-effective and space utilization storage solutions for all customers worldwide



WHY CHOOSE US



Customization



Free Design



Best Price

Co-operation Process

Customized Procedure

One-stop Service
7*24h on line



FAQ

Q: Are you manufacturer or trading company?

A: We are experienced manufacturer in the warehouse storage industry.

Q: How is your delivery time?

A: Generally, it is within 20 days against formal order and deposit. It also depends on other factors such as order quantity.

Q: What is the payment term?

A: T/T 30% as deposit, and 70% before delivery. We'll show you the photos of the products and packages before you pay the balance.

Q: What is your terms of delivery?

A: EXW, FOB

Q: Are samples available?

A: Yes, We can supply the sample if we have ready parts in stock, but the customers have to pay the sample cost and the courier cost.

Q: What is the minimum order quantity?

A: Generally, MOQ is 10sets.

Q: Can I make my own brand and designed products?

A: Yes, we do both OEM and ODM, so you can make your own product with your own logo.

Q: Where is your factory? Can I visit it?

A: Our factory located in Nanjing, Welcome to visit our factory. We can arrange pick-up from the airport or train station for you.

Q: What is the material being used for your products?

A: Mild steel Q235.

Q: I don't have drawing or picture available for the products, could you design it for me?

A: Yes, we can make the best suitable design for you but need to know more details.

Q: Do I get any guarantee from your company?

A: 3 years warranty

Q: How do you make our business long-term and good relationship?

A: Quality makes trust and reputation, plus competitive price to ensure our customers benefit ;



Jiangsu Qifei Intelligent Storage Equipment Co., Ltd.



+86-15161451461



sharonyan@qifeirack.com



warehouse-rackings.com

Add: #739 Dixiu Road Jiangning District Nanjing China